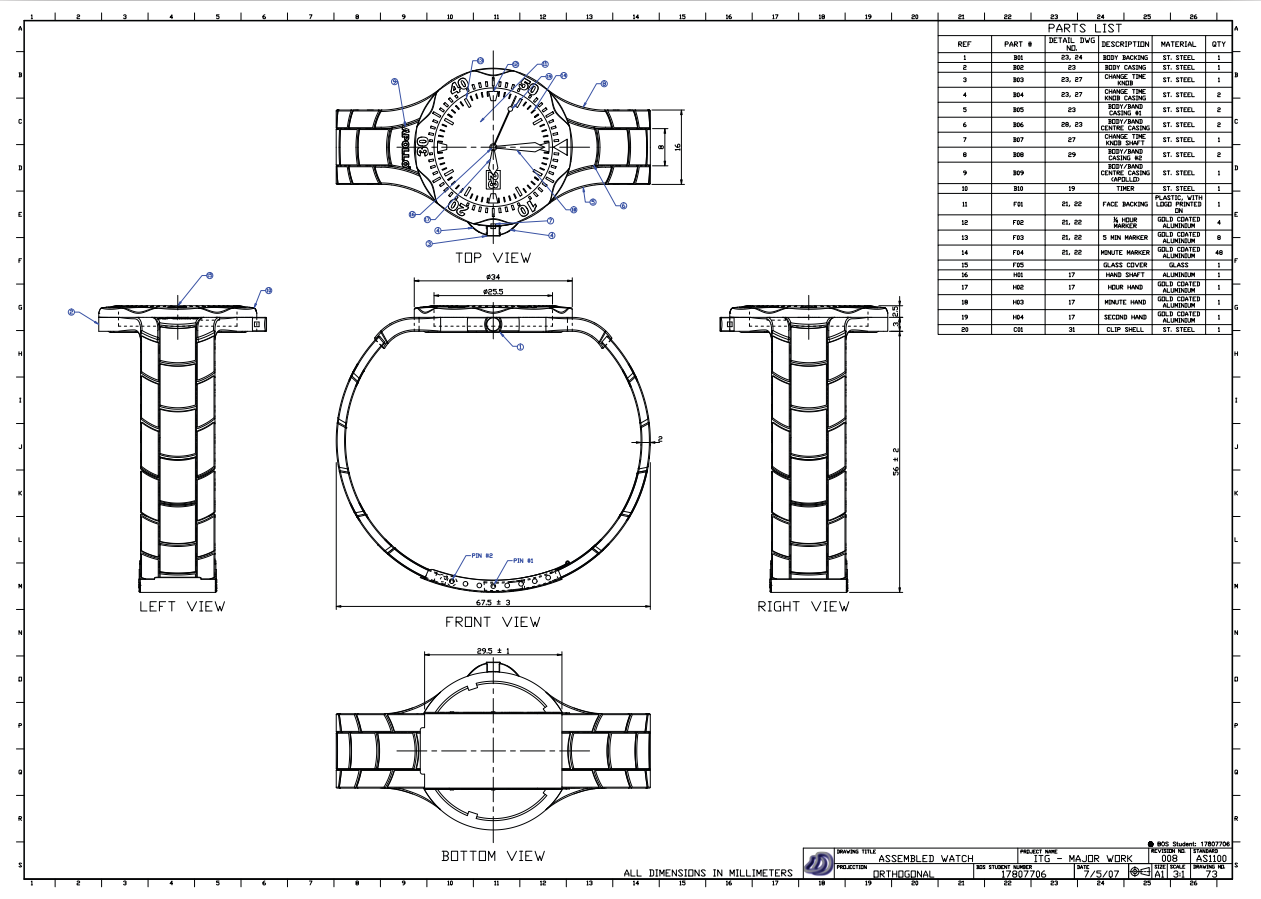




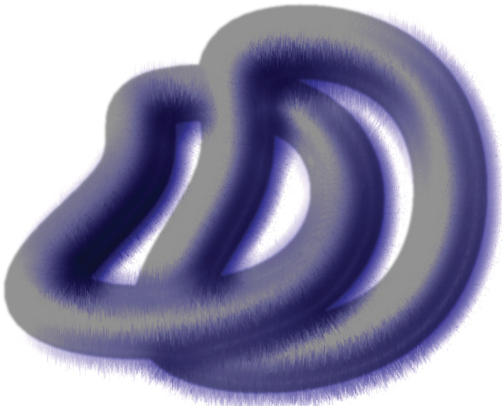
This work by [Andrew Harvey](#) is licensed under a [Creative Commons Attribution 2.5 Australia License](#).

INDUSTRIAL TECHNOLOGY - GRAPHICS INDUSTRIES

2007 HSC MAJOR PROJECT



PRODUCTION COMPONENT

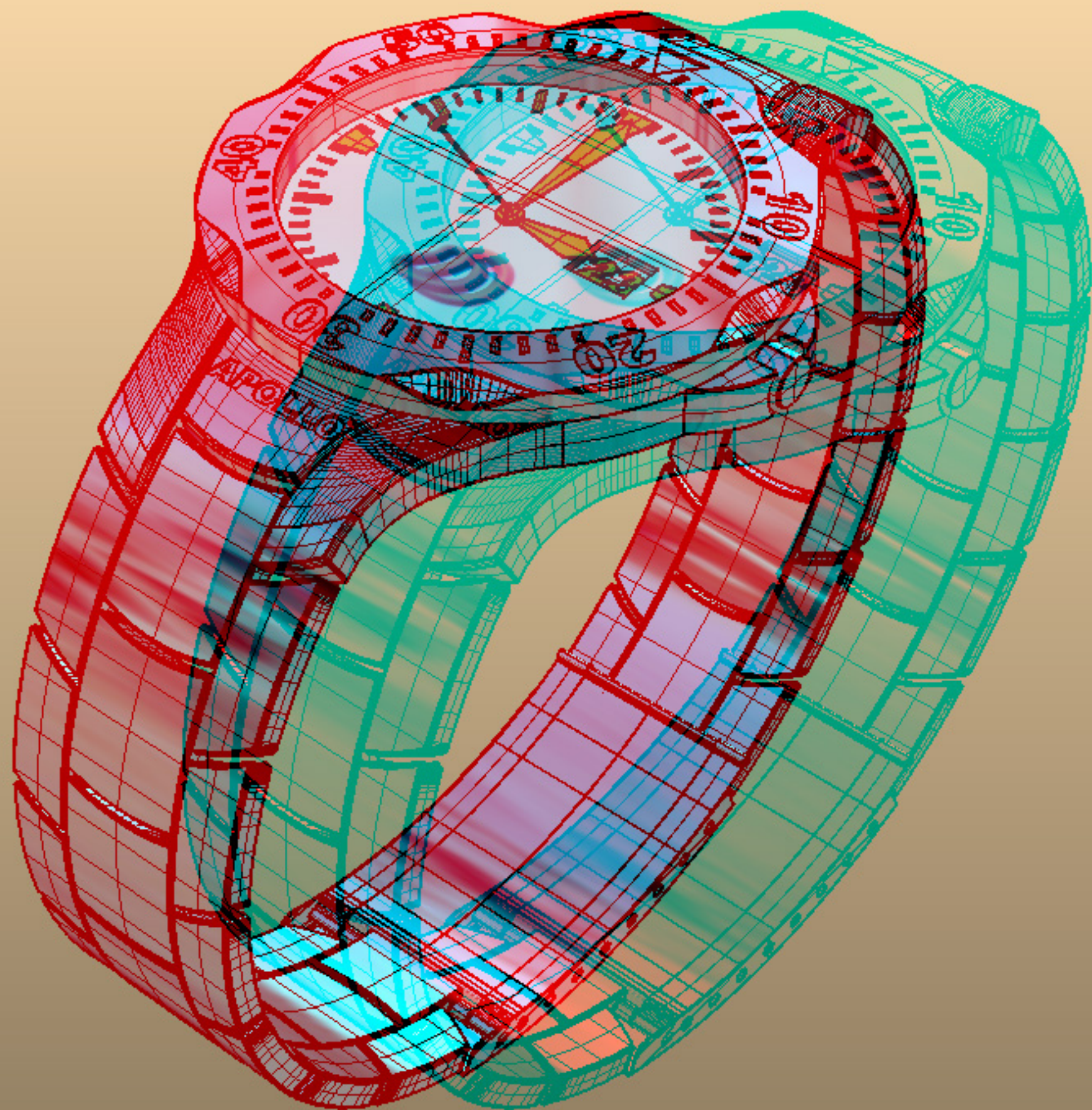


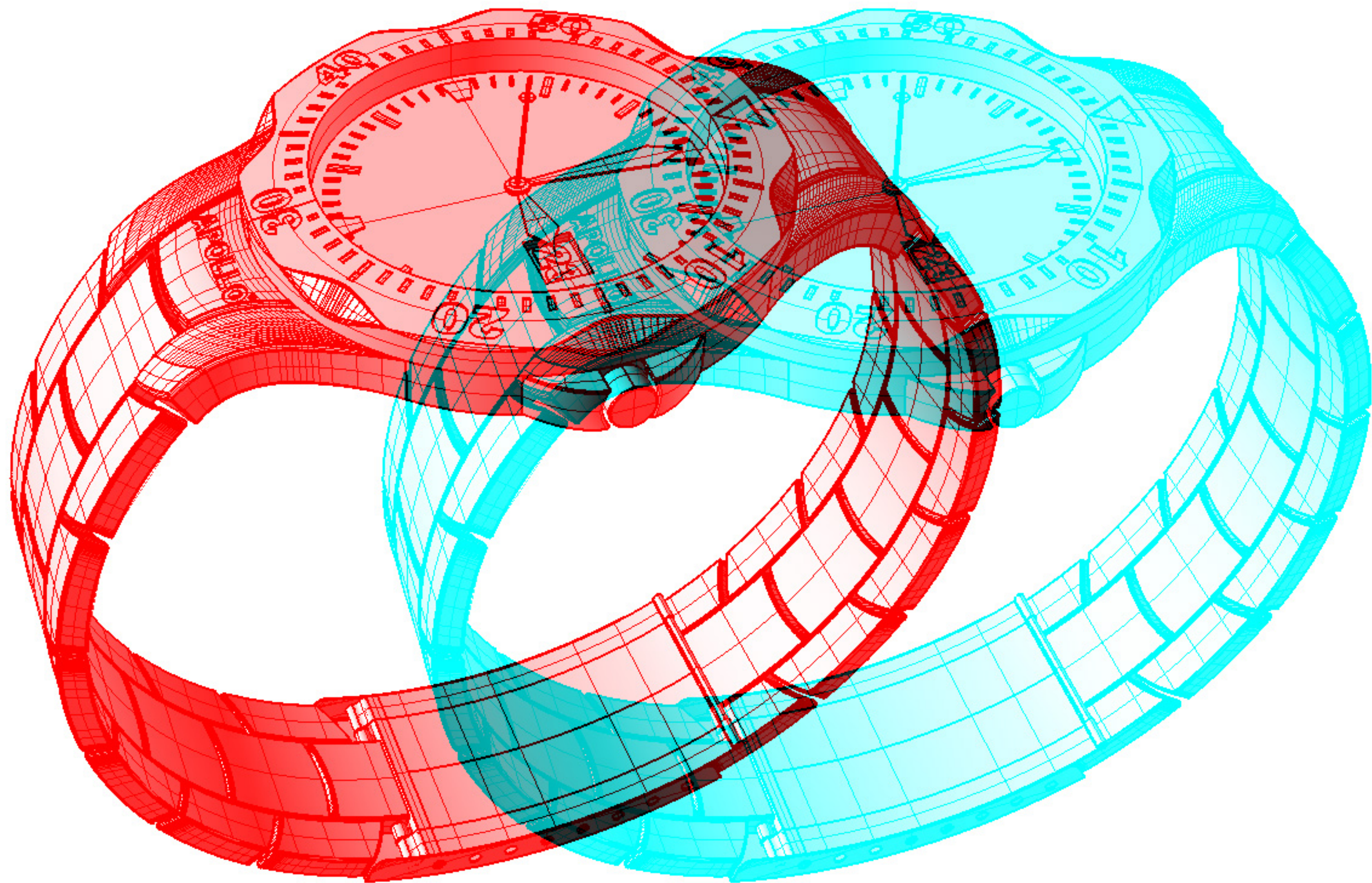
17807706

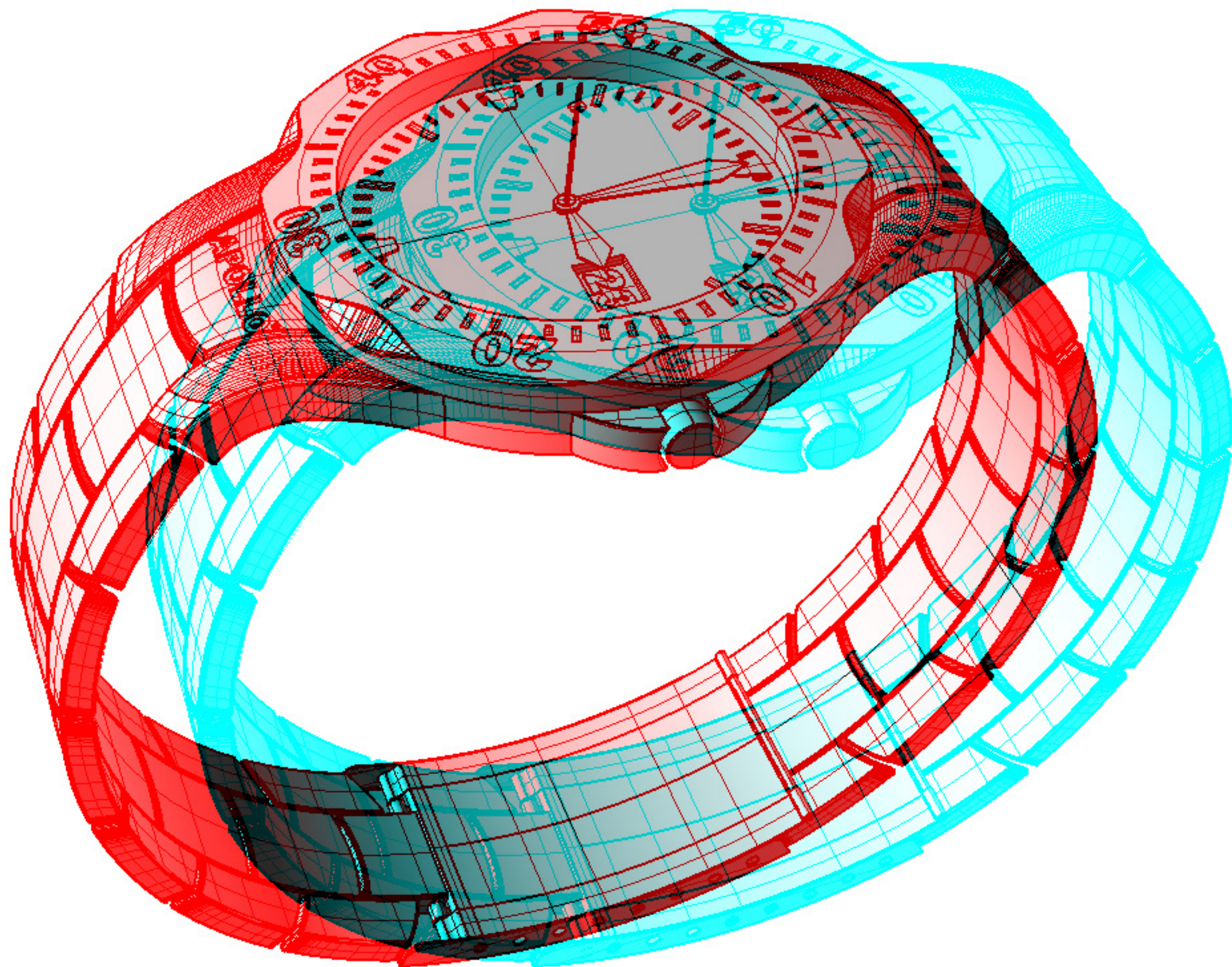


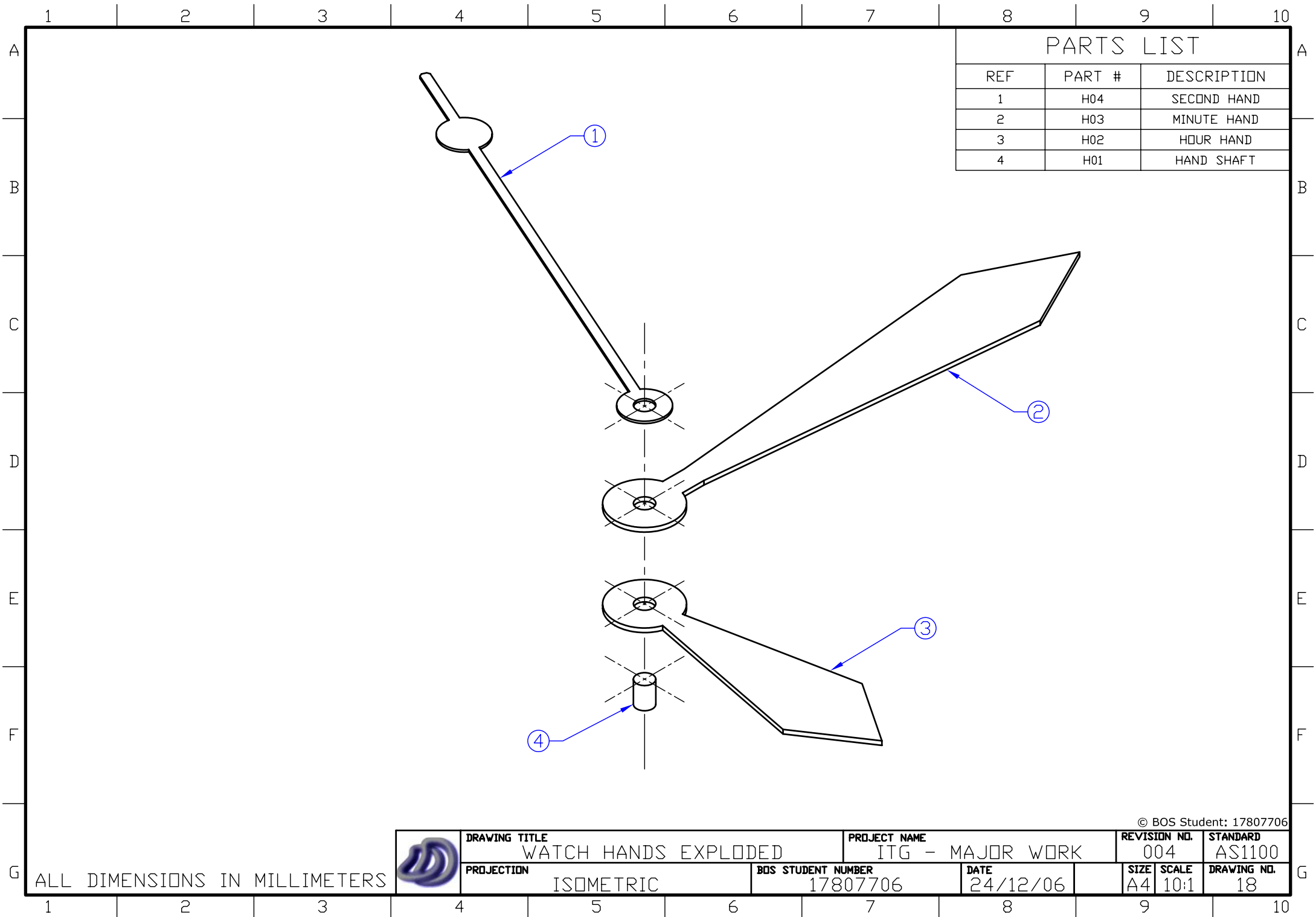
Viewing 3D Image

- The glasses should be worn with,
Red = Left Eye
Blue = Right Eye
(would work better with red-green glasses but I don't have any)
- Look from directly above page.
- Try looking from different distances away from the page.









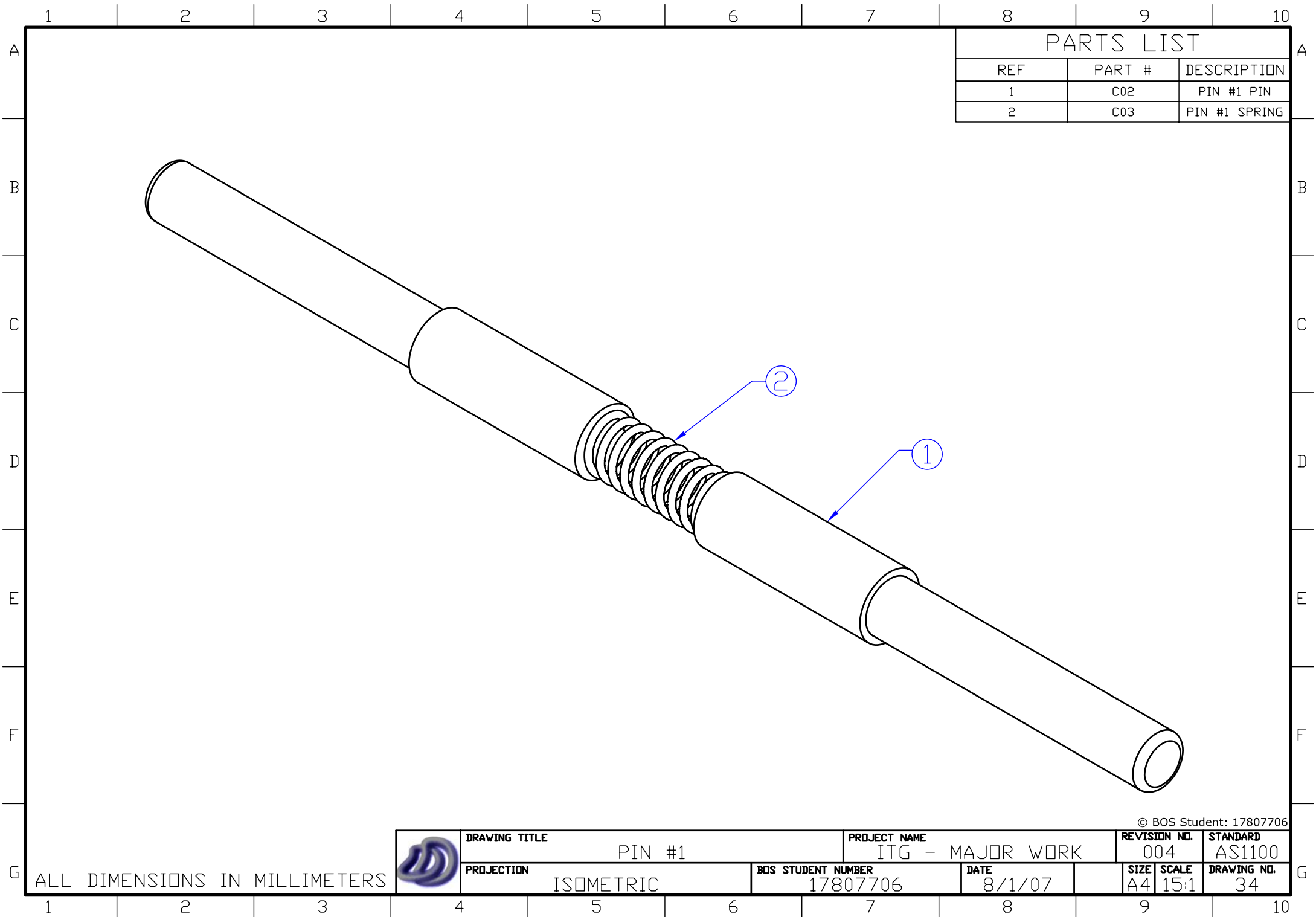
PARTS LIST		
REF	PART #	DESCRIPTION
1	H04	SECOND HAND
2	H03	MINUTE HAND
3	H02	HOURLY HAND
4	H01	HAND SHAFT



DRAWING TITLE WATCH HANDS EXPLODED		PROJECT NAME ITG - MAJOR WORK		REVISION NO. 004	STANDARD AS1100
PROJECTION ISOMETRIC	BOS STUDENT NUMBER 17807706	DATE 24/12/06		SIZE A4	DRAWING NO. 18

ALL DIMENSIONS IN MILLIMETERS

© BOS Student: 17807706



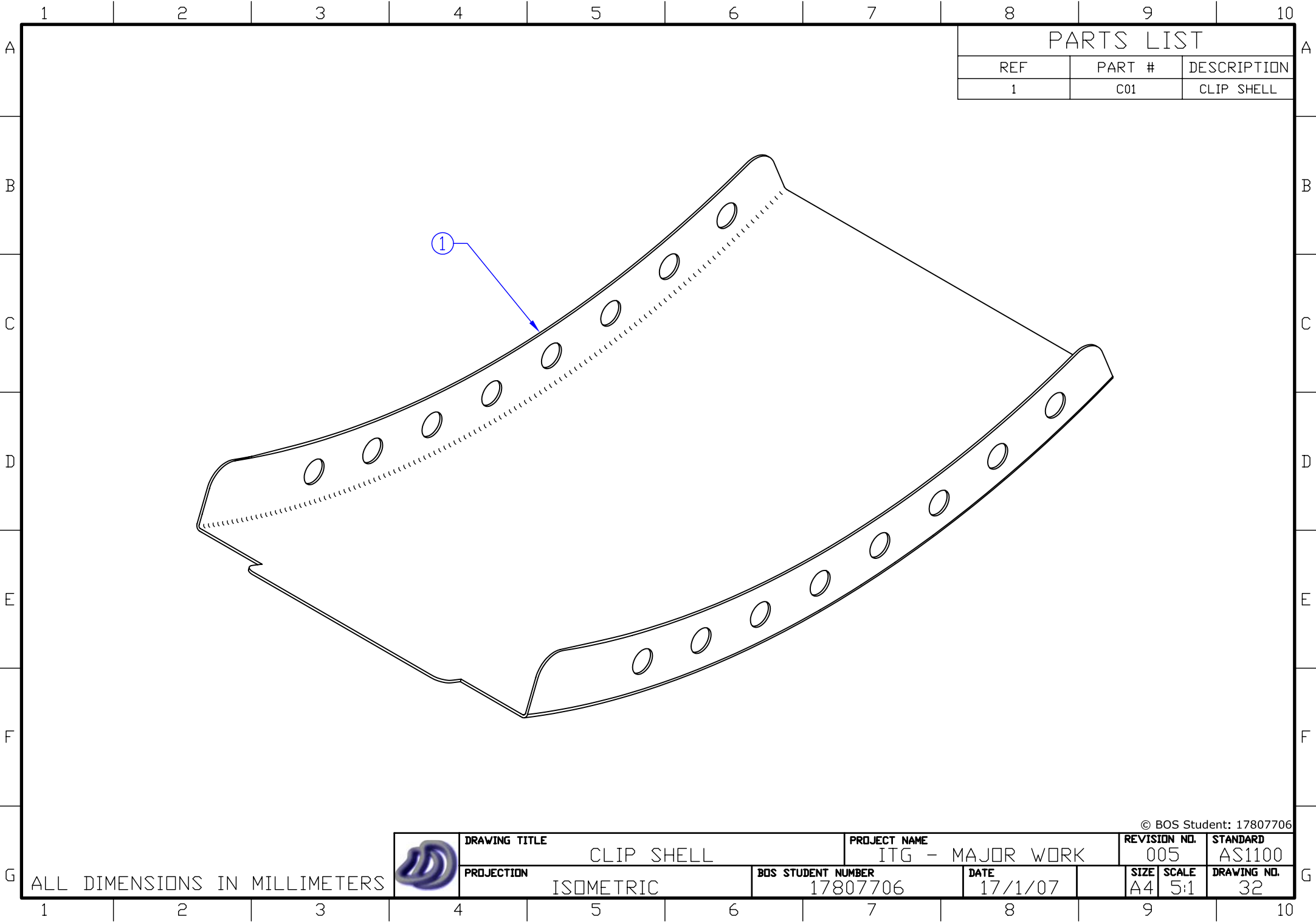
PARTS LIST		
REF	PART #	DESCRIPTION
1	C02	PIN #1 PIN
2	C03	PIN #1 SPRING

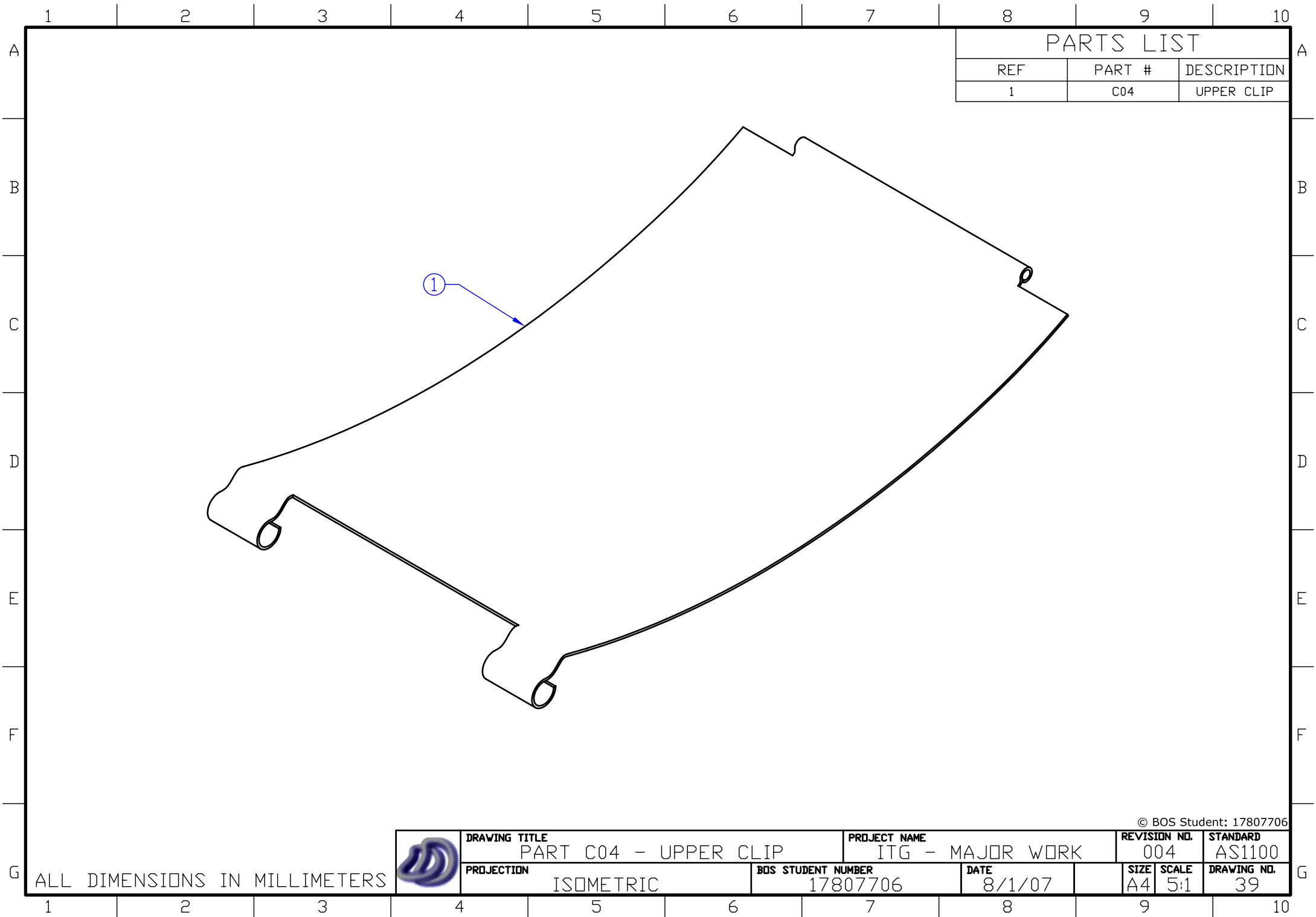


DRAWING TITLE PIN #1			PROJECT NAME ITG - MAJOR WORK			REVISION NO. 004		STANDARD AS1100	
PROJECTION ISOMETRIC			BOS STUDENT NUMBER 17807706		DATE 8/1/07		SIZE A4	SCALE 15:1	DRAWING NO. 34

ALL DIMENSIONS IN MILLIMETERS

© BOS Student: 17807706





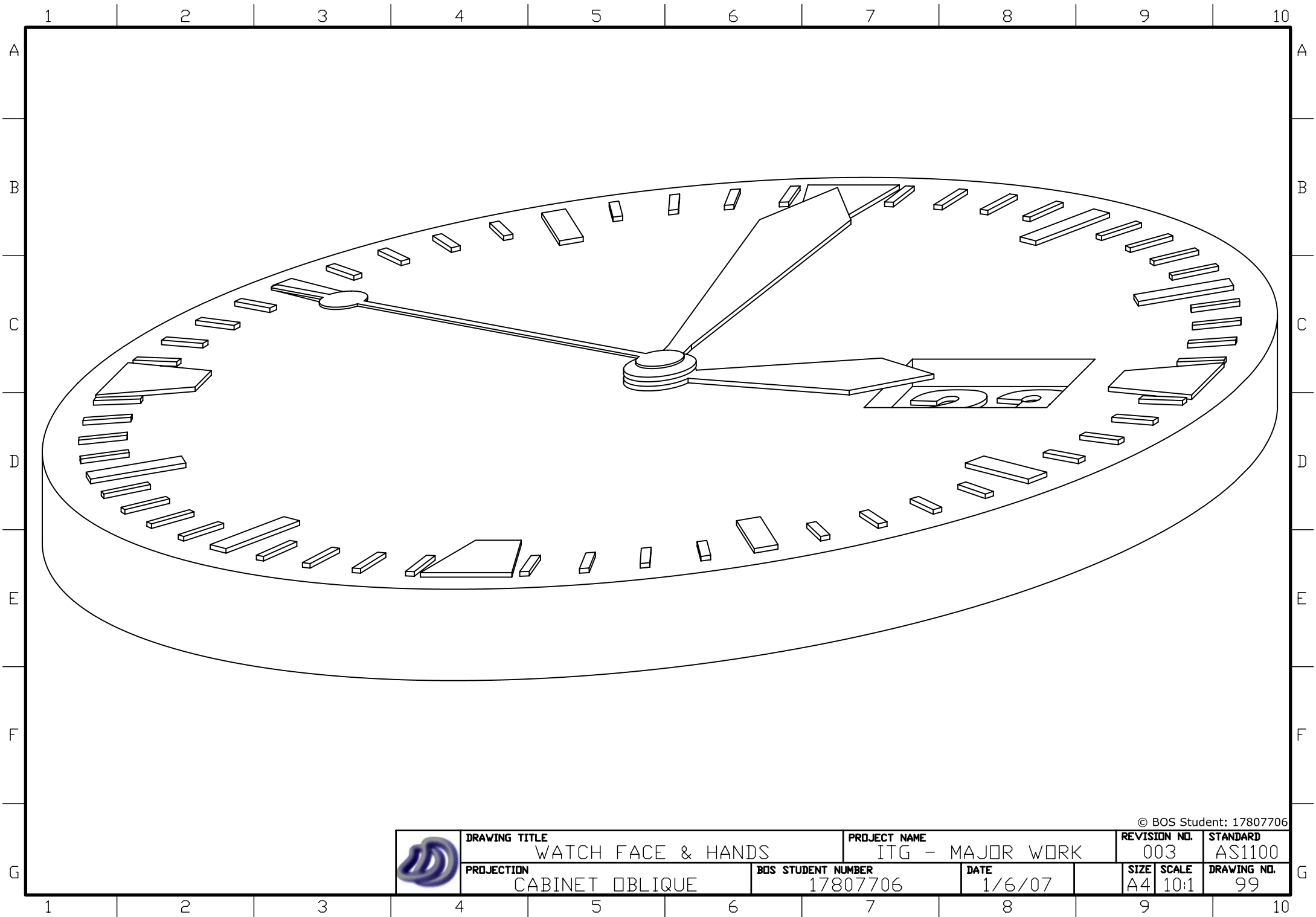
PARTS LIST		
REF	PART #	DESCRIPTION
1	C04	UPPER CLIP




DRAWING TITLE PART C04 - UPPER CLIP		PROJECT NAME ITG - MAJOR WORK		REVISION NO. 004	STANDARD AS1100
PROJECTION ISOMETRIC	BOS STUDENT NUMBER 17807706	DATE 8/1/07		SIZE A4	SCALE 5:1
				DRAWING NO. 39	

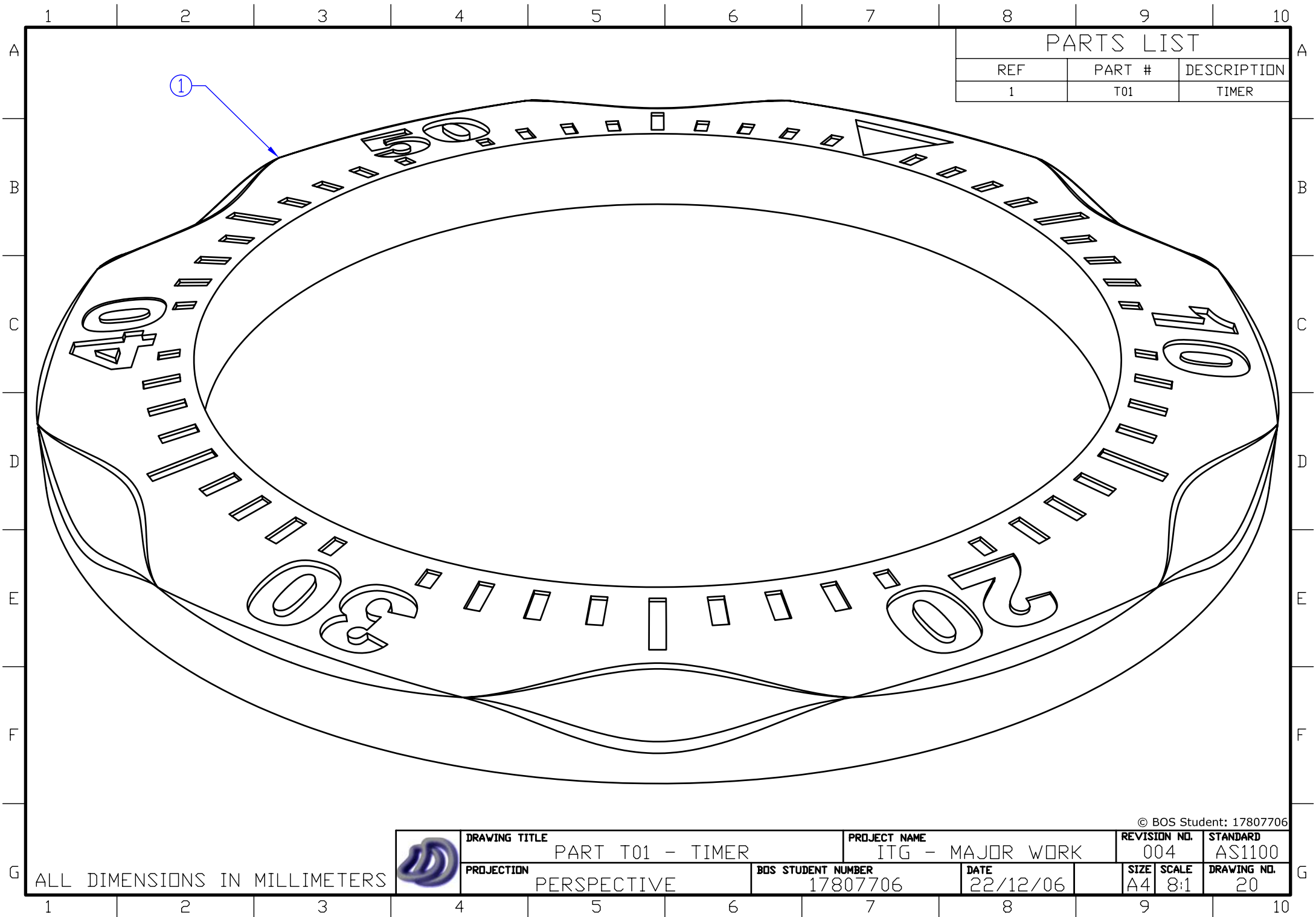
ALL DIMENSIONS IN MILLIMETERS

© BOS Student: 17807706



© BOS Student: 17807706

	DRAWING TITLE WATCH FACE & HANDS			PROJECT NAME ITG - MAJOR WORK			REVISION NO. 003		STANDARD AS1100	
	PROJECTION CABINET OBLIQUE			BOS STUDENT NUMBER 17807706		DATE 1/6/07	SIZE A4	SCALE 10:1	DRAWING NO. 99	



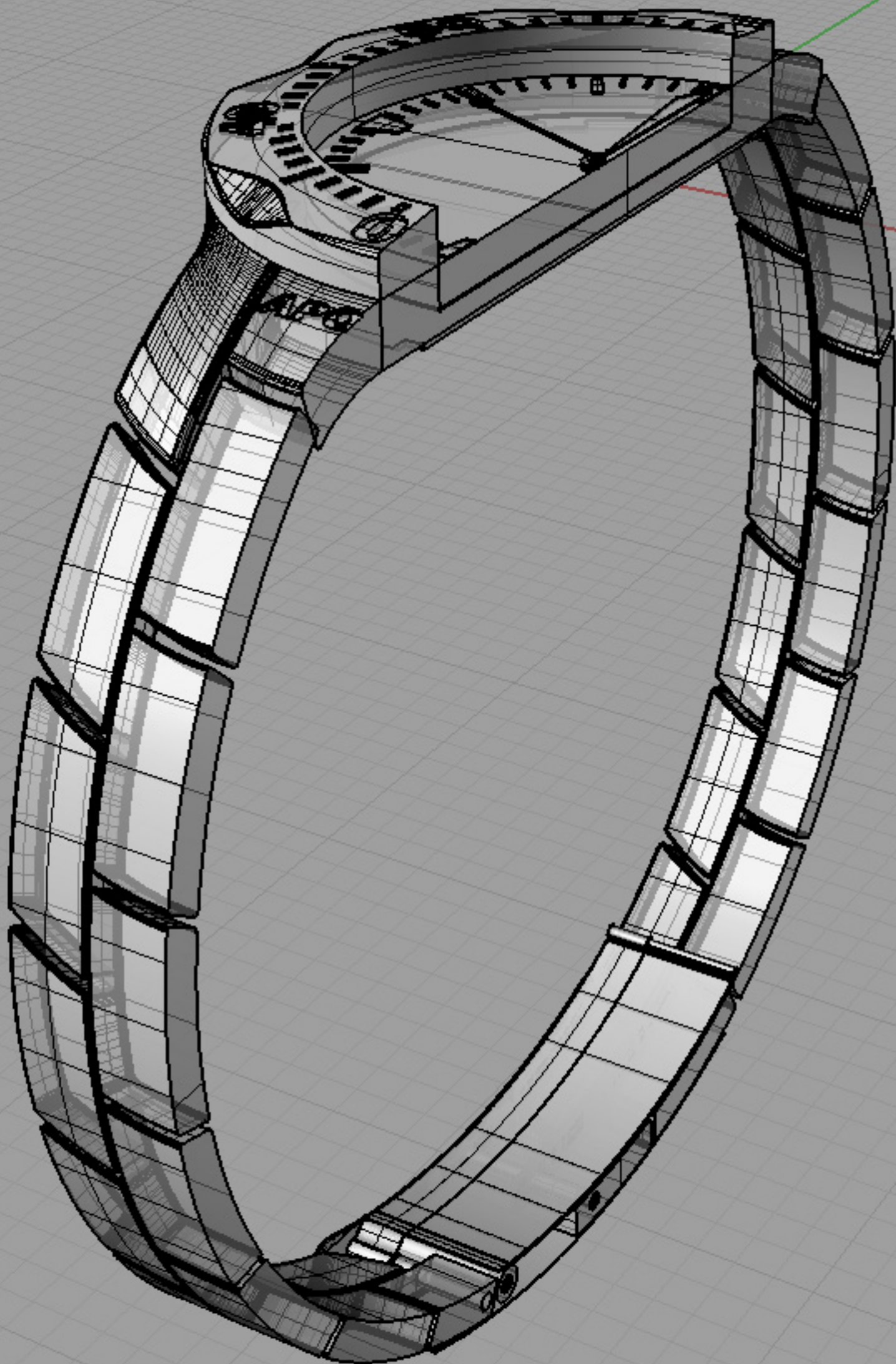
PARTS LIST		
REF	PART #	DESCRIPTION
1	T01	TIMER



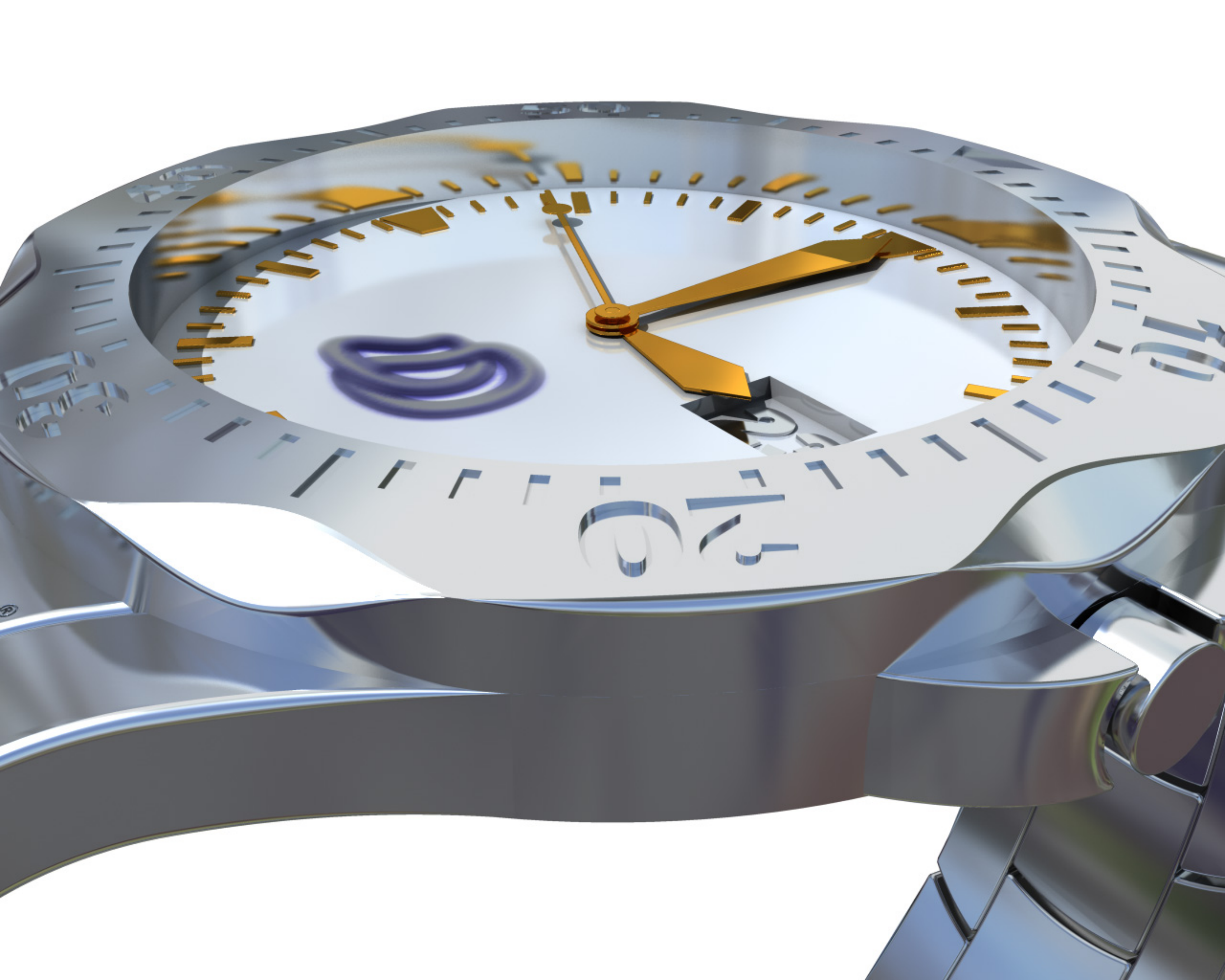
DRAWING TITLE		PROJECT NAME		REVISION NO.	STANDARD
PART T01 - TIMER		ITG - MAJOR WORK		004	AS1100
PROJECTION	BOS STUDENT NUMBER	DATE	SIZE	SCALE	DRAWING NO.
PERSPECTIVE	17807706	22/12/06	A4	8:1	20

ALL DIMENSIONS IN MILLIMETERS

© BOS Student: 17807706















APOLLO WRISTWATCH - PARTS LIST



KEY:



B = BODY



F = FACE



S = BAND



H = HANDS



C = CLIP

PART #	DETAIL DRAWING NO.	REF	DESCRIPTION	MANUFACTURING METHOD	MATERIAL	QTY
B01	23, 24	6, 1	BODY BACKING	PUNCHING	STAINLESS STEEL SHEET	1
B02	23	1	BODY CASING	MILLING	STAINLESS STEEL	1
B03	23, 27	2, 2	CHANGE TIME KNOB	EXTRUSION	STAINLESS STEEL	1
B04	23, 27	3, 3/4	CHANGE TIME KNOB CASING	MILLING	STAINLESS STEEL	2
B05	23	4	BODY/BAND CASING #1	FORGED	STAINLESS STEEL	2
B06	28, 23	1, 5	BODY/BAND CENTRE CASING	FORGED	STAINLESS STEEL	2
B07	27	1	CHANGE TIME KNOB SHAFT	EXTRUSION	LOW CARBON STEEL	1
B08	29	1	BODY/BAND CASING #2	MILLING	STAINLESS STEEL	2
B09			BODY/BAND CENTRE CASING (APOLLO)		STAINLESS STEEL	1
B10	19	1	TIMER	MILLING	STAINLESS STEEL	1
C01	40, 31	1, 1	CLIP SHELL			1
C02			PIN #1 PIN			2
C03			PIN #1 SPRING			1
C04	38, 39	1, 1	UPPER CLIP			1
C05			LOWER CLIP			1

PART #	DETAIL DRAWING NO.	REF	DESCRIPTION	MANUFACTURING METHOD	MATERIAL	QTY
C06	37	1	FLAP	FORGED	STEEL	2
C07	41, 43	1, 1	PIN #2 CASING	EXRUSION	STEEL	1
C08	41, 43	2, 2	PIN #2 STOPPER	EXRUSION	STEEL	2
C09	42	1	PIN #2 PIN	LATHE	STEEL	2
C10	41, 43	4, 3	PIN #2 SPRING			1
C11						
C12	46	1	PIN #1 LARGE CENTRE CASING			1
C13	47	1	PIN #1 SMALL CENTRE CASING			1
C14	48	1	PIN #1 LEFT CASING			1
C15	48		PIN #1 RIGHT CASING			1
C16			CLIP ROD #1			1
C17			CLIP ROD #2			
F01	21, 22	1	FACE BACKING			1
F02	21, 22	2	¼ HOUR MARKER	LASER CUTTING	STAINLESS STEEL SHEET	4
F03	21, 22	3	5 MIN MARKER	LASER CUTTING	STAINLESS STEEL SHEET	8
F04	21, 22	4	MINUTE MARKER	LASER CUTTING	STAINLESS STEEL SHEET	48
F05			GLASS COVER		GLASS	1
H01	17	4	HAND SHAFT	EXTRUSION	STAINLESS STEEL	1
H02	17	3	HOURLY HAND	LASER CUTTING	STAINLESS STEEL SHEET	1
H03	17	2	MINUTE HAND	LASER CUTTING	STAINLESS STEEL SHEET	1
H04	17	1	SECOND HAND	LASER CUTTING	STAINLESS STEEL SHEET	1