



TOUCHStone

Elegant design and innovative technology

Touchstone by Mainsflush brings a contemporary elegance to your bathroom. The stylish Touchstone touchpad is partnered with the Mainsflush flush valve for a whisper quiet, space saving toilet flush system.

MAINSFLUSH



It's not just about a beautifully crafted touchpad.

The Touchstone range combines sophisticated, elegant design with 21st century technology. Touchstone offers a breathtaking alternative to the look and feel of a standard flush button. The silky smooth touchpad and the sensory feedback of the electronics combined with the stunning design, create a luxurious new experience. Touchstone, smart and beautiful.

Our stylish touchpad operates a whisper quiet flush valve and eliminates the need for a cistern, opening up space in your bathroom.

You will marvel at the unique sensory experience of the Touchstone touchpad as it senses your finger and generates a subdued audio response with a flush that is quiet and discreet.

A choice of contemporary colours and materials to suit your needs, from minimalist white, to the opulence of models inlaid with gold. The shape is contemporary, the feel is organic.



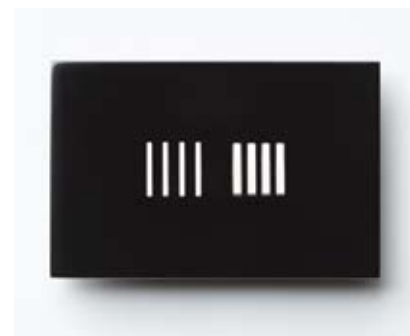
TOUCHStone
touchpad 9502341
Colour: **Glacier White/Grey**



TOUCHStone
touchpad 9502342
Colour: **Glacier White/Gold, 9ct gold inlay**



TOUCHStone
touchpad 9502345
Colour: **Jet Black/Grey**



TOUCHStone
touchpad 9502348
Colour: **Jet Black/Silver, Sterling silver inlay**





TOUCHStone
touchpad 9502344
Colour: **Tumbleweed /Grey**



TOUCHStone
touchpad 9502343
Colour: **Sonora /Grey**



TOUCHStone
touchpad 9502349
Colour: **Raphael/Grey**



TOUCHStone
touchpad 9502350
Colour: **Raphael/Gold, 9ct gold inlay**

Touchstone touchpads have it all. Beauty, strength and brilliant technology.

At Mainsflush we believe that the toilet flush system should be elegant and sophisticated but also technologically innovative. Since 1992 our patented touch technology and flush products have been leaders in the field.

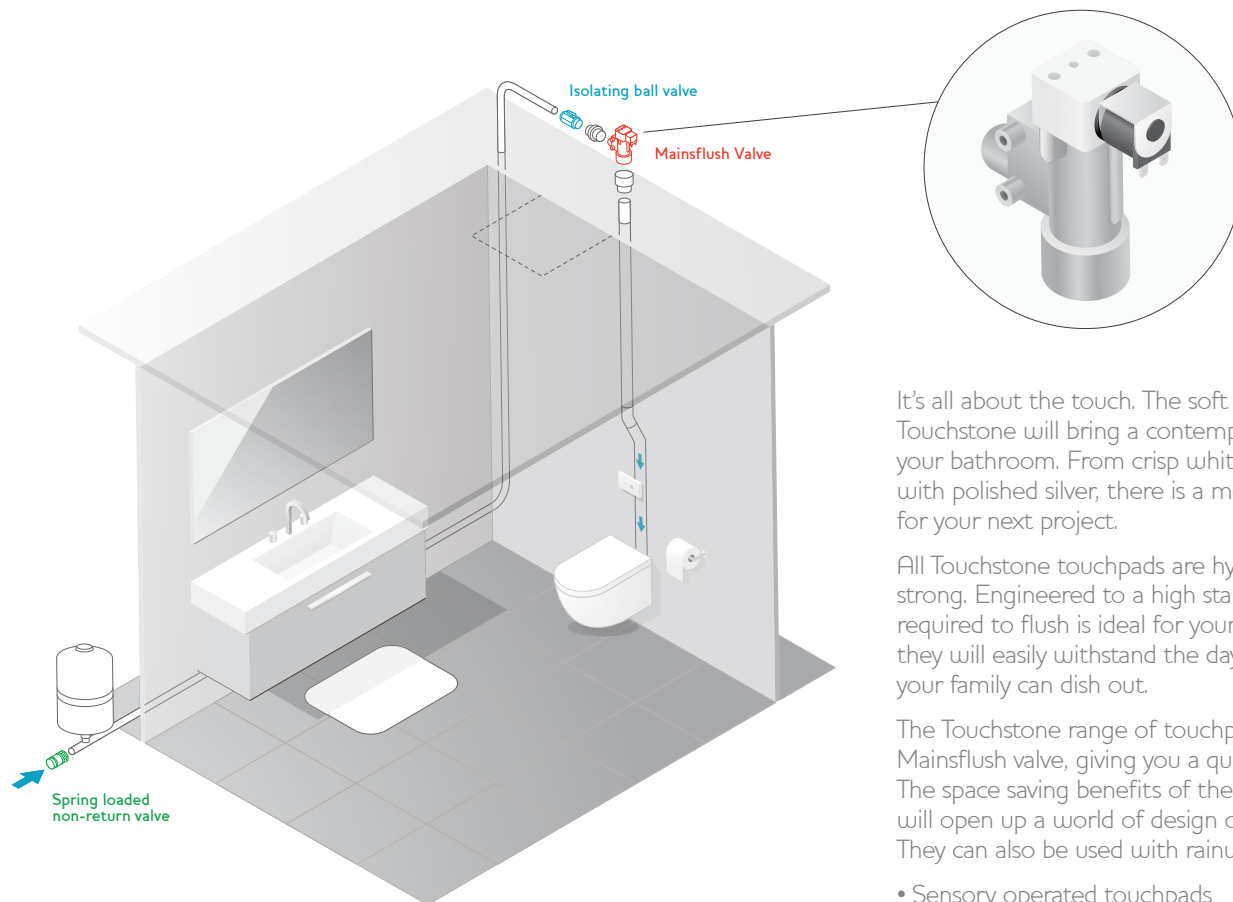
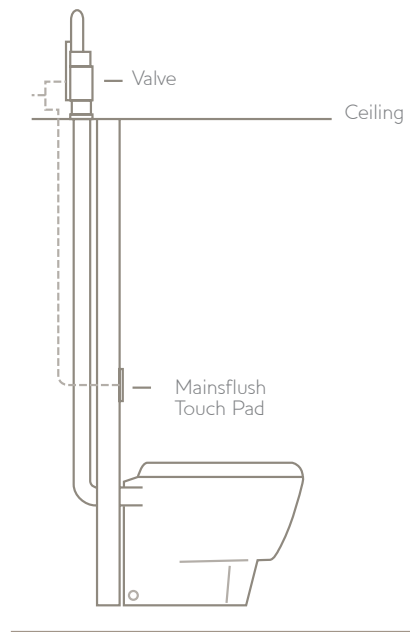
The Mainsflush system is 4 Star WELS rated and is also suited for use with 3 Star WELS rated pans and can be used with any wall hung or wall faced pan. What a luxurious way to save water.

Engineered to last, the Mainsflush valve can be installed in the wall or ceiling by any licensed plumber. With just one moving part, this clever valve is low maintenance.





TOUCHStone
touchpad M2313
Colour: **Stainless Steel/Black**
No sound on activation



It's all about the touch. The soft lines and silky feel of Touchstone will bring a contemporary elegance to your bathroom. From crisp white to dramatic black with polished silver, there is a model that's just right for your next project.

All Touchstone touchpads are hygienic, secure and strong. Engineered to a high standard. The soft touch required to flush is ideal for younger or old hands and they will easily withstand the day-to-day treatment your family can dish out.

The Touchstone range of touchpads activate the Mainsflush valve, giving you a quiet, discrete flush. The space saving benefits of the Mainsflush system will open up a world of design options for you. They can also be used with rainwater supply systems.

- Sensory operated touchpads
- 4 star WELS rated
- Adjustable to all pans including 3 star WELS rated
- Patented technology
- Low maintenance with only one moving part
- Audio response

Your bathroom. Your life.™

Visit any one of our 280 showrooms around Australia for all the latest products, concepts and inspiration to make your bathroom whatever you want it to be. And for the ultimate bathroom experience, go to one of our new bathroom life™ stores where you will find the biggest range of leading Australian and international brands.

Call **1800 032 566** or visit **www.reece.com.au** for your nearest bathroom showroom.

Due to limitations in the printing process the colours in this brochure are a guide only. The manufacturer/distributor reserves the right to vary specifications or delete models from their range without prior notification. The manufacturer/distributor takes no responsibility for printing errors. 12 months parts and labour warranty.

V2 [BROCHURE CODE 2130117]

MAINSFLUSH

